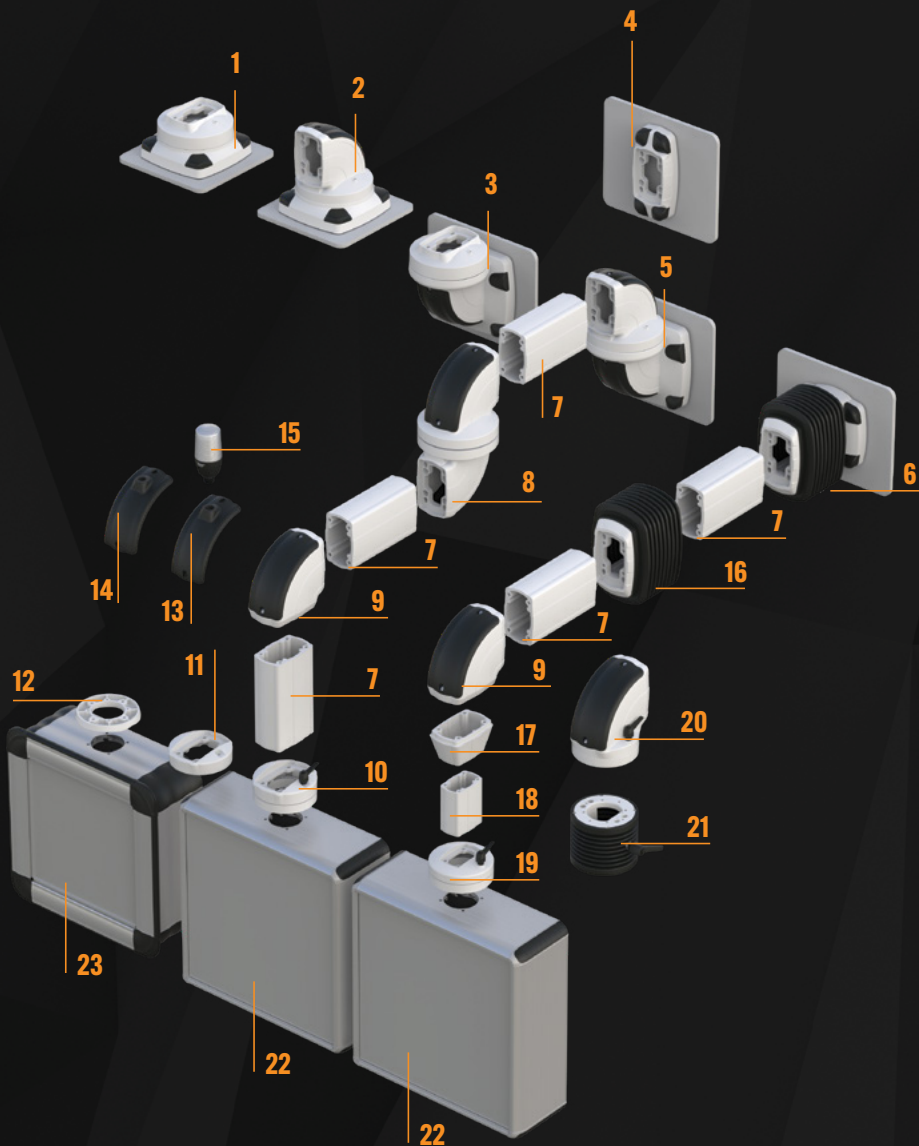


Support Arm And Panel Systems



TK120 Arm Systems



- 1 **TK120.610** Rotatable Top Mounted Vertical Outlet
- 2 **TK120.600** Rotatable Top Mounted 90° Angle Joint
- 3 **TK120.710** Rotatable Wall-Mounted Hinge Vertical Outlet
- 4 **TK120.800** Wall/Socket Mounting Bracket
- 5 **TK120.700** Rotatable Wall-Mounted Hinge Horizontal Outlet
- 6 **TK120.705** Steel Wall Mounted Module - With Bellow
- 7 **TK120 PROFILE** Support Profile
- 8 **TK120.500** Rotatable Intermediate Hinge
- 9 **TK120.420** 90° Angle Piece
- 10 **TK120.320** Ø130 mm Rotatable Panel Coupling
- 11 **TK120.310** Ø130 mm Panel Coupling
- 12 **TK060.315** Ø130 mm TKP2000 Panel Coupling
- 13 **TK120.810** Warning Lamp Cover (M22)
- 14 **TK120.811** Warning Lamp Cover (M18)
- 15 **IKZ.01** Warning Lamp
- 16 **TK120.505** Steel Interconnection Module - With Bellow
- 17 **TK120.820** 120/060 Support Arm Adaptor
- 18 **TK060 PROFILE** Support Profile
- 19 **TK060.320** Ø130 mm Rotatable Panel Coupling
- 20 **TK120.400** Ø130 mm Rotatable Panel 90° Angle Coupling
- 21 **TK060.840** Ø130 mm Tilting Bellow
- 22 **ECO PANEL**
- 23 **TKP2000 PANEL**



Teknokol Support Arm / Suspension arm systems used for HMI enclosures provide cost-efficient, fast lead time, modular easy assembly and customized solutions upon requests. Teknokol Support arms are designed in three different options according to the loading capacities.

Teknokol produces these three series named as TK045 for low, TK060 for medium and TK120 for heavy loading capacities. Our systems are compatible, operator-friendly and quality guaranteed and are all perfectly compatible with Teknokol Operator Control Panel and HMI Enclosures which are used highly in the industry.

ECO Panel & TKP2000 Series



Human Machine Interface enclosures designed for Support/Suspension Arm systems, Kiosks and VESA mounts. All enclosures are easily customizable and support Siemens, Omron, B&R, Beckhoff, Advantech and many more.

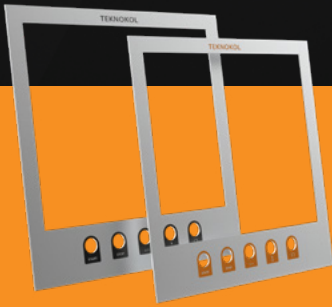
Control panels and Industrial PCs are now fundamental for machines and production lines. Our systems are designed for more secure operation, are ergonomically designed, and are modular.

TEKNOKOL offers two enclosure series, the ECO line (ECO060, ECO090, ECO120, and ECO150) and TKP2000. The internal depth of the enclosure can be selected for your application, moreover we can make enclosures that exceed the maximum depth of our standard models upon request, which we call the +90 Solution.



Standard features include IP65 protection, anodized aluminum color, RAL 7035 corner couplings, and RAL 7016 corner covers. Teknokol can provide custom-colored couplings and covers upon request, as well as machining for LCD screens, buttons, switches, etc.

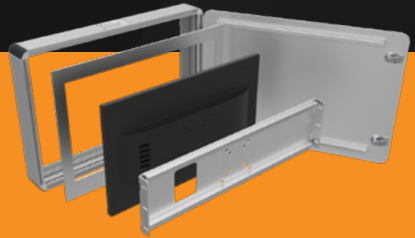
Panel Custom Solutions



FRONT PANEL CUTTING

We process aluminum front and back panels individually to meet your specific requirements.

When requested, custom text and shapes in different colors can be written on the aluminum sheet surface.



ASSEMBLY SOLUTIONS

We design custom sheet metal mounting equipment for the easy and secure installation of industrial displays, mini PCs, electronic equipment, and other products you wish to place in the panel.



MACHINING CUTTING SERVICE

Custom cuts in various shapes can be made upon request for all types of control panels.



COOLING SOLUTIONS

During operation, we can create slots on the rear cover for fan exhaust vents to expel any unwanted heat that may accumulate inside the standard panel.

Sheet Metal Keyboards

ERGONOMIC

MODULER DESIGN

OPERATOR FRIENDLY



KLV.SC.N.1



It is a keyboard system that offers a fixed angle of use with keyboard usage dimensions: width: 450 mm, height: 180 mm, depth: 20 mm. It supports many different types of computer keyboards. In order to mount this product, the connection holes on the panel must be opened beforehand. In case of dust, dirt and liquid spills, it can be easily wiped clean. It cannot be mounted on panels with a depth of less than 90 mm and a width of less than 300 mm. It supports ECO 090, ECO 120, ECO 150 series panels.

It is a sliding keyboard system with an adjustable height of 170 mm-225 mm, width: 450 mm, depth: 20 mm. It supports many different types of computer keyboards. You can easily change the angle of use of the keyboard according to your own use. In order to mount this product, the connection holes on the panel must be opened beforehand. In case of dust, dirt and liquid spills, it can be easily wiped clean. It cannot be mounted on panels with a depth of less than 90 mm and a width of less than 300 mm. It supports ECO 090, ECO 120, ECO 150 series panels.

KLV.SC.L.1



Kiosk & Stand Systems

Our enthusiastic and experienced R&D team constantly Works for innovative ideas to provide solutions for customers needs. We offer four different Kiosk / Stand Systems which are modular, ergonomic and reliable. We have stitch and cabin types which are customizable with di ensions according to our customers needs.



KS.KABIN.01



KS.SLIM.060



KS.060.01



KS.PC.01

Coupling Towers



Tower dimensions are:

150×150 mm, 2.0, 2.5, or 3.0 m Height.
200×200 mm, and 2.0, 2.5, or 3.0 m Height.

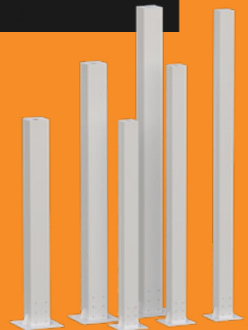
Standard tower color is RAL7035.
Custom coloring is available.

Towers are assembled on a base for stable assembly.

The tower lid contains peripherals such as cables, sockets, etc.
Easily assembled thanks to special coupling holes and provided screws.

Custom colors, dimensions, or configurations are available.

Coupling towers are the solution when a support arm and panel assembly cannot be attached to a machine or to an automation line.



Led Signal Lights

Audiovisual signal lights are the fastest way to warn your crew of a maintenance, material request or machine fault using both high-intensity light and 90 dB alarm.

TEKNOKOL warning systems are compatible with our support arm series. Features include multicolored lights in one block, M22 mm opening for electrical connection, and LED and flasher options.



IKZ.01

Technical Information

Color	: 5 Color
Electrical Life	: 10,000 hour
Operating Temperature	: ° C-25/+70
Insulation Voltage (Ui)	: 300 V
Protection Degree	: IP65
Frequency (f)	: 50 Hz
Standard	: TS EN 60947-1 TS EN 60947-5-1 TS EN 60947-5-1/A1



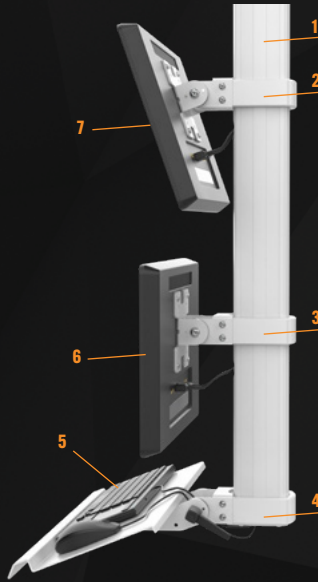
IKZ.02

Technical Information

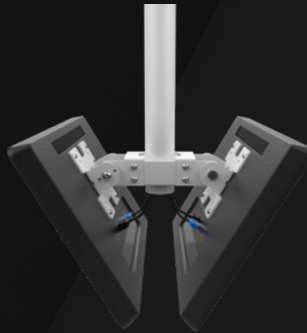
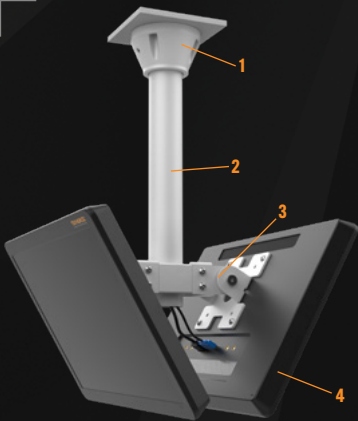
Color	: 5 Color
Electrical Life	: 10,000 hour
Operating Temperature	: ° C-25/+70
Insulation Voltage (Ui)	: 300 V
Protection Degree	: IP65
Frequency (f)	: 50 Hz
Standard	: TS EN 60947-1 TS EN 60947-5-1 TS EN 60947-5-1/A1



Custom Product Solutions

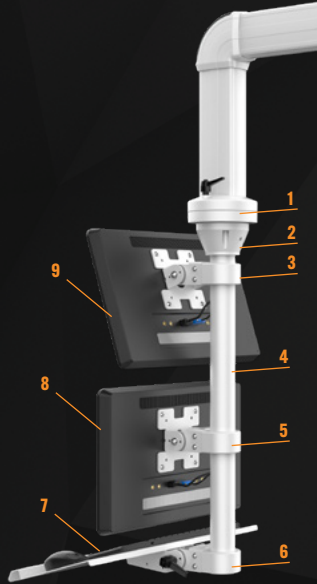


- 1 TK060 PROFILE
- 2 TK060.839
- 3 TK060.839
- 4 KLV.SC.K.1
- 5 KEYBOARD
- 6 HMI
- 7 HMI

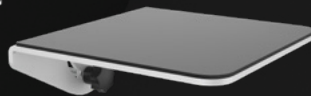


- 1 TK060.819
- 2 TK060.827.050
- 3 TK060.838
- 4 HMI

“Assembly applications are for illustrative purposes.”



- 1 TK060.320
- 2 TK060.819
- 3 TK060.837
- 4 TK060.827.100
- 5 TK060.837
- 6 KLV.SC.K.2
- 7 KEYBOARD
- 8 HMI
- 9 HMI



- 1 TK060.320
- 2 TK060.834
- 3 ECO 150 PANEL
- 4 MPAD.01
- 5 MOUSE



TEKNOKOL is an innovative manufacturing company which has a highly experienced background for more than eighteen years who started its expertise in the industrial automation industry, and in a very short period of time developed to become one of the most demanded brands in both the domestic and international market.

Teknokol opened up its doors for the production facility in 2012 regarding the production of high quality support arm and control panels systems in an area of 5500m², located in Bursa, Turkey.

We are a medium sized family owned company, which steers its global business from our headquarters located in Bursa, Turkey. Our team of around fifty employees brings out excellent pioneering new developments, continues together with high integrity, working for better quality each and every day.

Teknokol trademarks, patents, and design registrations are recognized around the globe, and our products are certified by international testing laboratories. Recently, who added the UL Certification, Teknokol aims to be one of the top five suppliers of the world for suspension arm systems, enclosures and other alluminium joints, stands and kiosks which are highly used in the machinery industry.

One of our important priority is to create customer-specific panel systems, giving our customers the chance to create their own ideas as well, showing them the possible solution to every conclusion in the industry of enclosures and support arm systems.

Our mission is always to keep our name in the bright side of the mind of our valuable customers, also staying focused in the improvement, innovation, high quality and accessible pricing without the sacrificing basic principles such as honesty, transparency and customer satisfaction. Teknokol A.Ş aims to be one of the top leader brand throughout the World for the production of operator support arm and control panel systems.



Scan For Website



Scan For Catalog

TEKNOKOL®
Support Arm and Control Panel Systems

Teknokol Operatör Kol ve Pano Sistemleri A.Ş
Kayapa, Karanfil Cad Kayapa Sanayi Bölgesi No:6, 16315 Nilüfer/Bursa
Tel: +90 224 443 23 18 | teknokol@teknokol.com